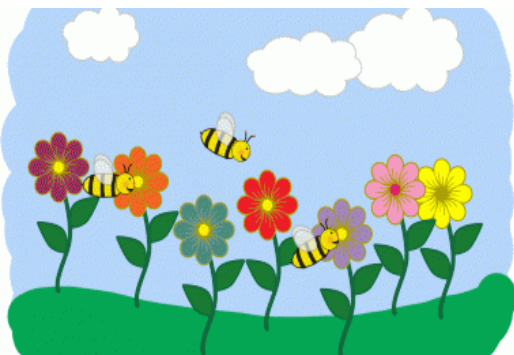


Allendale Middle School

May / June 2024 Menu



Available Daily

- Caesar Salad
- Chef Salad
- Yogurt Lunch
- Bosco Breadsticks
- Pizza
- Hamburger
- Cheeseburger
- Chicken Sandwiches
- Chicken Nuggets
- Wrap of the Week
- Sub Sandwich

All Meals include:



- Choice of
- White or Chocolate Milk
- Fresh & Canned Fruit,
- Vegetable of the Day
- & Side Salad

Breakfast

- Monday/Confetti Pancakes OR Blueberry Waffles
- Tuesday/Mini Pancake Wrap OR Pancake on a Stick
- Wednesday/Toasted Bagel
- Thursday/Breakfast Pizza
- Friday/Stuffed Hash Brown

Breakfast w/ Milk -.00
Lunch w/ Milk-.00
Milk Only-.50 each

***Funds must be deposited for milk only purchases**

Monday	Tuesday	Wednesday	Thursday	Friday
6 Cheesy Garlic Breadsticks California Blend	7 Chicken & Waffle Broccoli	8 Twin Tacos Refried Beans	9 Chicken Mashed Potatoes, Gravy & Corn	10 Mozzarella Sticks w/dipping sauce Carrot Coins
13 Waffle Bar Sausage Patty* Baked Apples Dragon Punch	14 Stromboli* Steamed Carrots	15 Pasta Bar Garlic Bread Broccoli	16 Mini Corn Dogs Potato Rounds	17 Meatball Sub Baked Beans
20 French Toast Sticks Sausage Patty* Baked Apples Vegetable Juice	21 Pepperoni & Cheese Calzone Carrot Coins	22 Nacho Bar Black Bean & Corn Salsa	23 Sausage*, Egg & Cheese Muffin Hash Brown	24 Club Sandwich* on a Bun Sweet Potato Rounds
27 	28 Chicken & Waffle Broccoli	29 Twin Tacos Refried Beans	30 Chicken Mashed Potatoes, Gravy & Corn	31 Cheesy Garlic Breadsticks California Blend
3  Chef's Choice	4 Chef's Choice	5 Chef's Choice	6 Half Day Today & Tomorrow	7 HAPPY LAST DAY OF SCHOOL

Weekly Wrap: Ham, Turkey & Bacon* Club*

Weekly Wrap: Chicken Ranch

Weekly Wrap: Ham, Turkey & Bacon* Club*

Weekly Wrap: Chicken Ranch

Weekly Wrap: Ham, Turkey & Bacon* Club*

Menu subject to change due to product availability. All menu items may contain: milk, eggs, fish/shellfish, wheat or soy.

If you have qualified for benefits in the past, please complete an application at: allendale.familyportal.cloud Please contact Jodi Brouwer, FSD at 616.892.5591 for more information. USDA is an equal opportunity employer and provider.