

Good Afternoon Oakwood Families,

Here are a few final items for the year...

Annual Allendale Community Field Day - June 13

Consider placing on your agenda for [this Saturday, June 13](#), a trip to the 4th Annual Allendale Community Field Day. The theme for this year's Field Day is "Things that Pollinate" and a number of fun events have been planned that center around this theme. This is a great event for the whole family to be involved in. During the final days of school, Oakwood 4th grade students had the privilege of receiving a personal invitation, along with a flowering plant, from Dr. Peter Riemersma, one of the organizers of the event. I have included attachments that give more information about [Saturday's](#) event. We hope to see you there!

June is Always Bittersweet

This past [Friday](#) at noon, the Oakwood staff gathered on the sidewalk near the exit of the bus loop to give a final farewell to our students. As we watched the buses pull out, we commented on how quickly the year seemed to go by and that we were going to miss our students, especially those who would not be returning to Oakwood in the fall. At the same time, we feel genuine excitement for them as they head off for a summer filled with adventure. We are confident, as fall comes around and school is ready to begin, that our students will be well-prepared to face the challenges of a new grade level, new friendships, and heightened expectations. So, congratulations are in order for all of our students as they successfully completed another grade level! We wish each of them the very best as they head into the next adventure.

Oakwood Parents Rock!

I cannot begin to express the level of appreciation I have for our Oakwood parents. We are fortunate to be so strongly supported by you. This year we had many of you volunteer in our classrooms, at special events, or on committees. With pride, we can report to you that we've accumulated over 4850 volunteer hours this year! Thank you so much for partnering with us in the work of educating your children.

Special Note of Thanks to the OEC

During the 2014-15 school year we had a group of parents, the Oakwood Encouragement Committee, who blessed the staff with their gift of encouragement. All through the year our 14 OEC members thoughtfully supported the staff through gestures such as decorating the workrooms, writing teachers notes of encouragement, dropping off treats, and organizing meals. Each act of encouragement, from the smallest one to the largest, helped build up staff members and fostered a positive atmosphere in the building. The entire Oakwood staff sends a heartfelt "thank you!" to each of the OEC members.

If participating on the 2015-16 Oakwood Encouragement Team sounds good to you, please watch for an invitation to our September kick off meeting.

Respectfully,

Doug Bol, Principal
Oakwood Intermediate

DESCRIPTION OF EVENTS

Bee Hive Unveiling: Come and meet the bees at our new view-able bee house and enter a drawing to name the queen. A bee expert will be on hand to answer any questions. (10:30 AM & 11:30 AM)

What's Making Me Sneeze?: At location #3, go out with your family and collect pollen from different types of plants. Bring these back to our microscope tent to see why some make you sneeze and why some will not. (We're finding pollen at 9:15, 9:45, 10:15, 10:45, 11:15, and 11:45)

Solitary Bee Houses: At location #4, participants will be building a variety of mason bee houses. Some will be used for research on campus and others can be brought home.

Pollination Syndrome Scavenger Hunt: It isn't always about the birds and the bees, there are many other types of pollinators. Come and learn about different pollination strategies and earn entries for the raffle. (location #5).

What a Bee Sees: Participants will be able to observe how a flower is designed to attract bees and how nectar tracks work. Come to location #6 to view flowers under UV light.

Pollination Scramble: Here, at location #7, your busy bee youngsters will get the opportunity to make and wear bee antenna and simulate pollination as they race to transport pollen from one location to matching colored flowers.

Plant a Flower: This year we are adding a garden specifically designed to attract pollinators. Come and plant with your family at location 8.

Face Painting: Every kid loves their face painted, so why not get a pollinator painted on? Flowers, butterflies, bees, humming birds, etc. can all be found near registration at location 1.

If you like what we are doing and would like to get involved with future field days, email us at either nicemrsp@gvsu.edu and/or piccarke@gvsu.edu.

Want to Support this Event? Donations can be made to Allendale Public Schools Community Field Day and dropped off at Allendale Public Schools Central Office.



Don't forget to like us on Facebook!

FOURTH ANNUAL ALLENDALE COMMUNITY FIELD DAY

A vertical poster for the 4th Annual Allendale Community Field Day. The top section is black with white text: '4th Annual Allendale Community Field Day' and 'Hands-on science learning FREE Family Fun'. Below this is a photograph of a bee on a flower. Text on the left side of the photo says 'PLANT in the pollination garden BUILD a bee house & take it home LEARN what a bee sees'. In the center, it says 'Activities for all ages'. On the right, it says 'Saturday June 13 9-12 am Allendale Public Schools K-8 Campus FREE Lunch provided Visit us on Facebook: Annual Allendale Community Field Day'. At the bottom right, it says 'Organized by Abby Allen & Amanda Davidson'.

4th Annual
Allendale Community Field Day
Hands-on science learning
FREE Family Fun

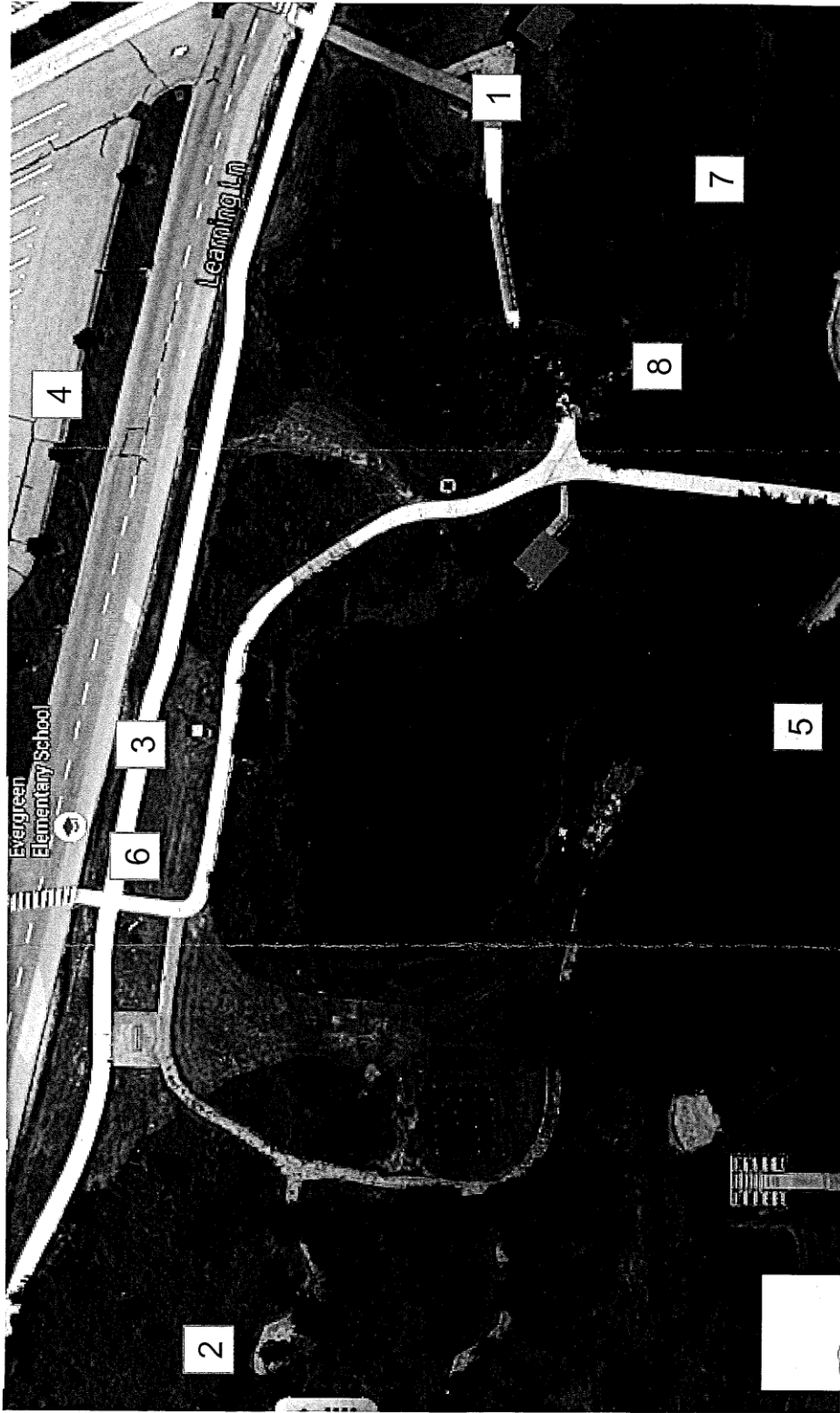
PLANT in the pollination garden
BUILD a bee house & take it home
LEARN what a bee sees

Activities for
all ages

Saturday
June 13
9-12 am
Allendale
Public Schools
K-8 Campus
FREE
Lunch
provided
Visit us on
Facebook:
Annual
Allendale
Community
Field Day

Organized by Abby Allen
& Amanda Davidson

Mission Statement: The objective of the Annual Allendale Community Field Day is to bring together Allendale teachers, GVSU professors, GVSU students, Allendale families, members of the community and community businesses/groups to promote outdoor education and create the foundation upon which a variety of engaging activities outside the classroom will be developed and take place.



- | | |
|---|--|
| 1. Registration, Face Painting, and Lunch | 5. Pollination Syndrome Scavenger Hunt |
| 2. Bee Hive Unveiling | 6. What a Bee Sees |
| 3. What's Making Me Sneeze? | 7. Pollination Scramble |
| 4. Solitary Bee House Construction | 8. Plant a Flower Pollination Garden |

This project is sponsored by the Allendale Community Foundation, Allendale Rotary Club, Schepers Concrete, Countryside Greenhouse and Bizstream